





WORLD YOUTH DAY PANAMA 2019

From Panama to Lisbon



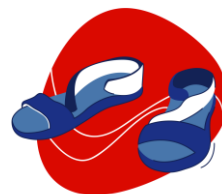


PARTICIPATION FIGURES



117,304

TOTAL NUMBER OF PARTICIPANTS



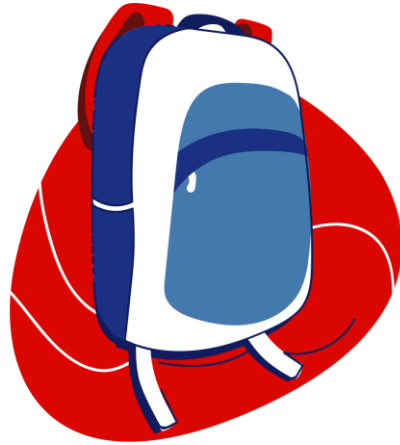


140 countries

79% AMERICA 12% EUROPE 2% ASIA

2% AFRICA 1% OCEANIA

PILGRIMS





87,445

REGISTERED PILGRIMS



GENDER

56%



44%

AGE



(20%)



(24%)

with DISABILITY



(0.2%)

VOCATION TYPE OF REGISTRATION



(2%)



(2%)

ONLINE



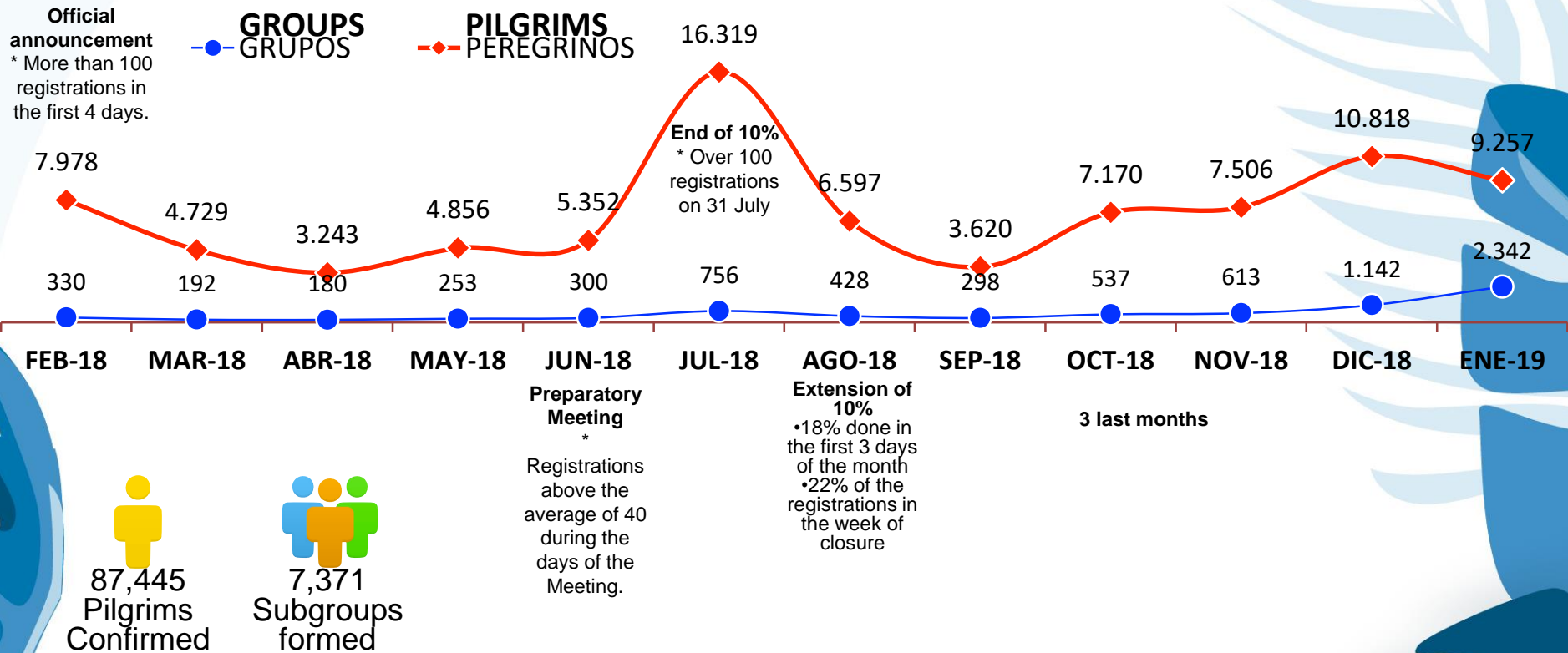
(93%)

ON SITE



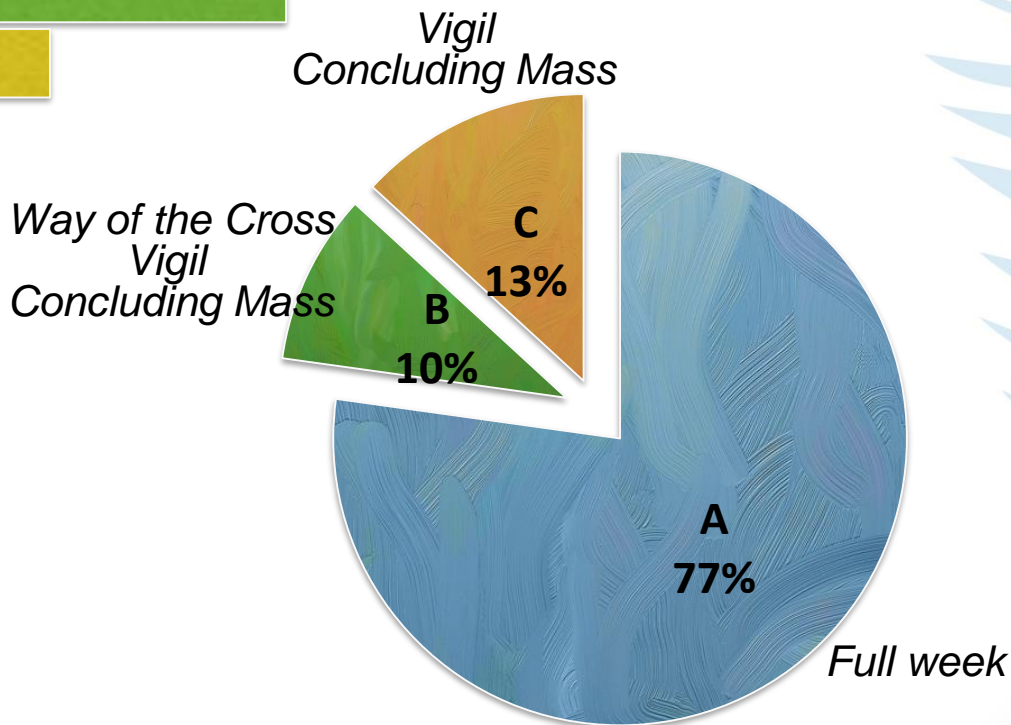
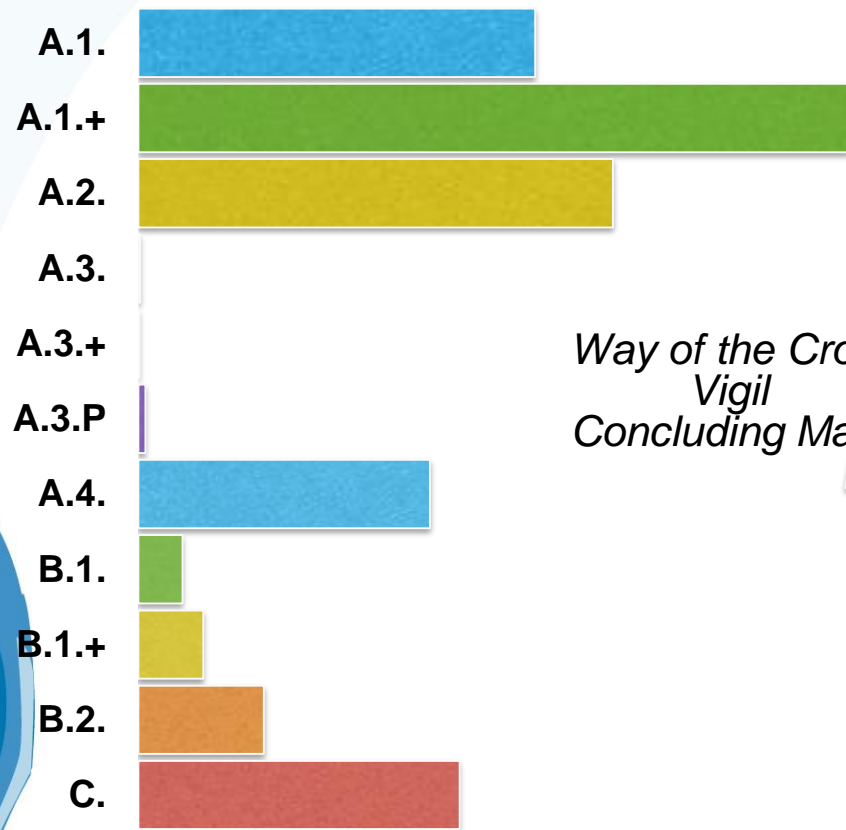
(7%)

MONTHLY REGISTRATIONS



OPTIONS AND PACKAGES


87,445
pilgrims
confirmed





VISAS and FLIGHTS

VISAS AND FLIGHTS



- ◉ Meetings and support in processing the pilgrims directly with COPA. More than 20,000 seats were coordinated with COPA directly.
- ◉ Meetings and support in processing the pilgrims directly with the Ministry of Security, Customs, Immigration, with the Security Council.
- ◉ Visa procedures with difficulties in areas where Panama did not have Consular Representation.
- ◉ Special attention for pilgrims who had difficulties in returning home.



3,924

PARTICIPATING PRIESTS



PROVENANCE



(8%)



(92%)



VOLUNTEERS



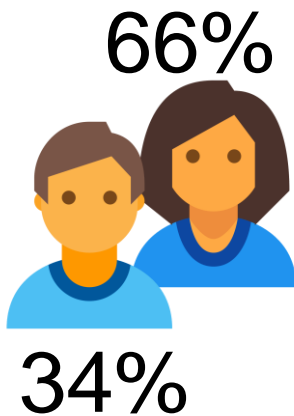


20,000

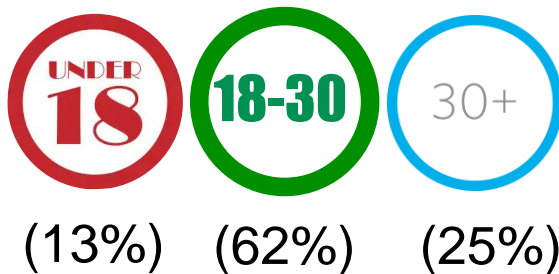
ALLOCATED VOLUNTEERS



GENDER



AGE



PROVENANCE





BISHOPS AND SECRETARIES





606

BISHOPS AND SECRETARIES

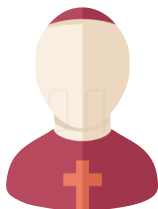


CARDINALS



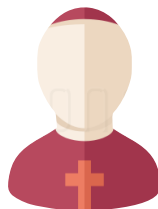
4%

BISHOPS



74%

APOSTOLIC
PREFECT



0.2%

SECRETARIES



22%

CATECHESIS WITH BISHOPS



137 VENUES



98,680 available places



139 BISHOP
CATECHISTS

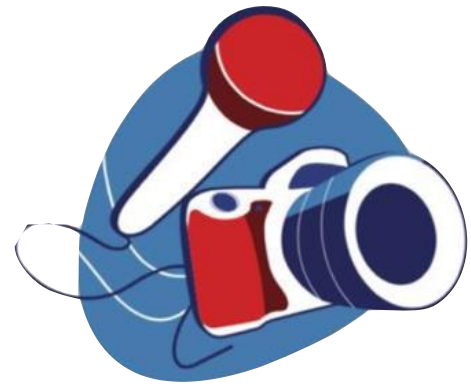


25 LANGUAGES





MEDIA

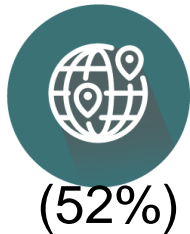


3,196

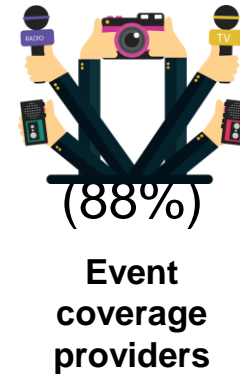
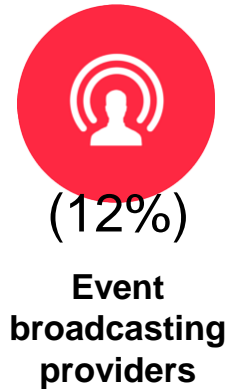
ACCREDITED JOURNALISTS



PROVENANCE



ROLE



IMPACT ON SOCIAL MEDIA



Sumatoria Total Total numbers

Alcance Reach

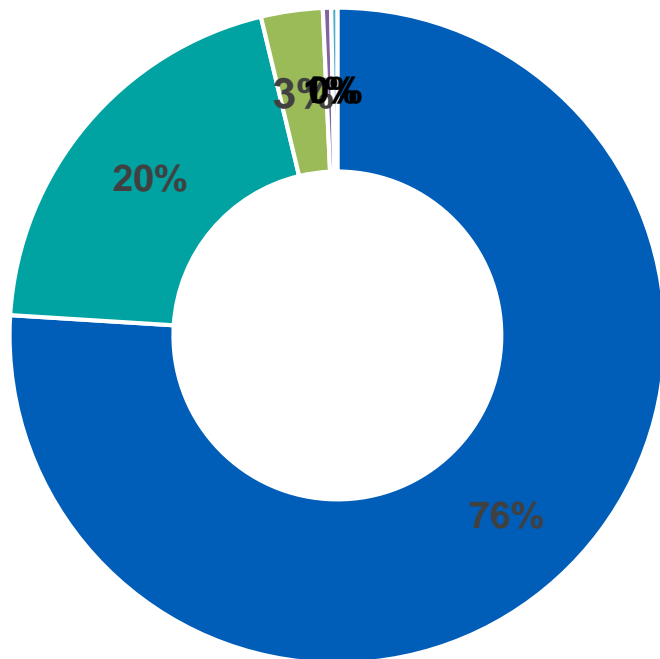
45.996.883

Interacciones Interactions

14.241.258

THE SOCIAL IMPACT ON VISITORS

97% of those surveyed by GAD3 would recommend visiting Panama for its hospitality, generosity, cultural exchange and living in harmony.



- Very good
- Muy Buena
- Buena Good
- Regular Moderately good
- Mala Negative
- Muy Mala Very negative



Consulting • Research • Communication

SPECIAL INVITATIONS

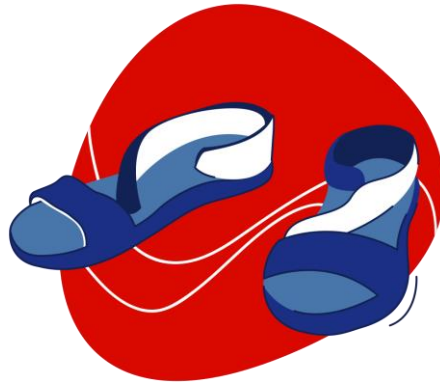


Church authorities, general superiors and founders

- (2) Daughters of Mary Help of Christians
- (2) Milicia de Santa María
- (2) Rector Major of the Salesians of Don Bosco
- (1) Provincial Superior of the Order of St. Augustine
- (1) Master of the Order of Preachers
- (1) Superior General of the Society of Jesus
- (3) Founders of the Neocatechumenal Way
- (1) Prelate of Opus Dei
- (1) Prior of the Ecumenical Community of Taizé
- (1) Founder of the Shalom Community



VOCATIONS FAIR



200

VOCATIONAL SPOTS

GUIDANCE



88%

SUPPORT



10%

TRAINING



3%

IMPACT OF THE VOCATIONS FAIR



45K -50K
VISITORS



200 VOCATION
GUIDES



72 EXHIBITORS

YOUTH FESTIVAL



222



PARTICIPATING GROUPS

MUSIC



DANCE



THEATRE



SPORT



CONVERSATIONS



IMPACT OF THE YOUTH FESTIVAL



+500
PRESENTATIONS



+800 PERFORMERS
ON STAGE OF
STA. MARÍA
LA ANTIGUA



5 CHURCHES WITH
EUCCHARISTIC
ADORATION

CRISTONAUTAS PARK



IMPACT OF PARTICIPATION



+5,000
PARTICIPANTS IN
VIRTUAL REALITY



+4,000
PARTICIPANTS AT
EUCHARIST ADORATION



MAIN EVENTS





**Around 700,000 people
at the Final Mass**

Over 600,000 people
at the Vigil





400,000 people at
the Way of the Cross

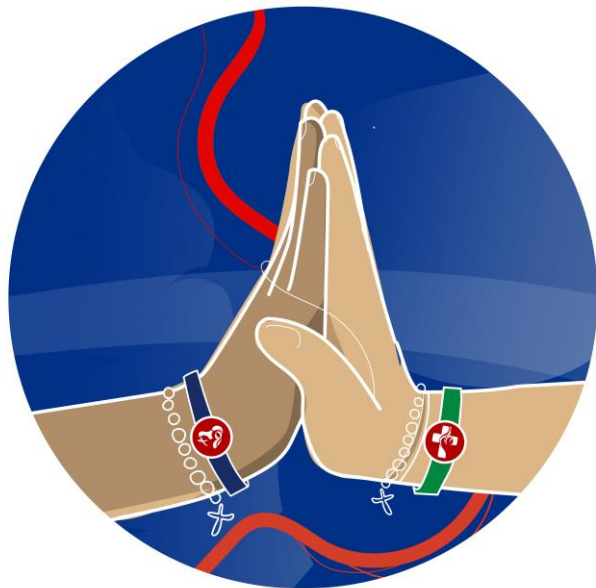


250,000 people at the
Papal Welcome

MAIN EVENTS



- ◉ Setting up of the platforms and areas for the participation of a great number of young people
- ◉ Participation of delegates from all over the world at the various events
- ◉ Events according to schedule, respecting transmissions and the movement of pilgrims and the Pope
- ◉ Design of areas for the mass participation of pilgrims and local people
- ◉ Health and Safety, reasonably well coordinated despite some unexpected events



From Panama to Lisbon

DE PANAMÁ A LISBOA

From Panama 2019 to Lisbon 2023



- ◉ National Organisation. Movements, ministries, groups, etc. It is important that they integrate or maintain communication with the episcopal conferences which are the main interlocutors with the LOC.
- ◉ Registration and updating of information on time.
- ◉ Patience. The LOC is attending to many things at once, and a gathering of this kind requires many interactions. We apologise for not being able to respond to your concerns in a timely manner.
- ◉ It is a grace but also a challenge to organise a WYD. Do not stop praying for the organisers. Prayer and communion are the best support during the time of preparation.

